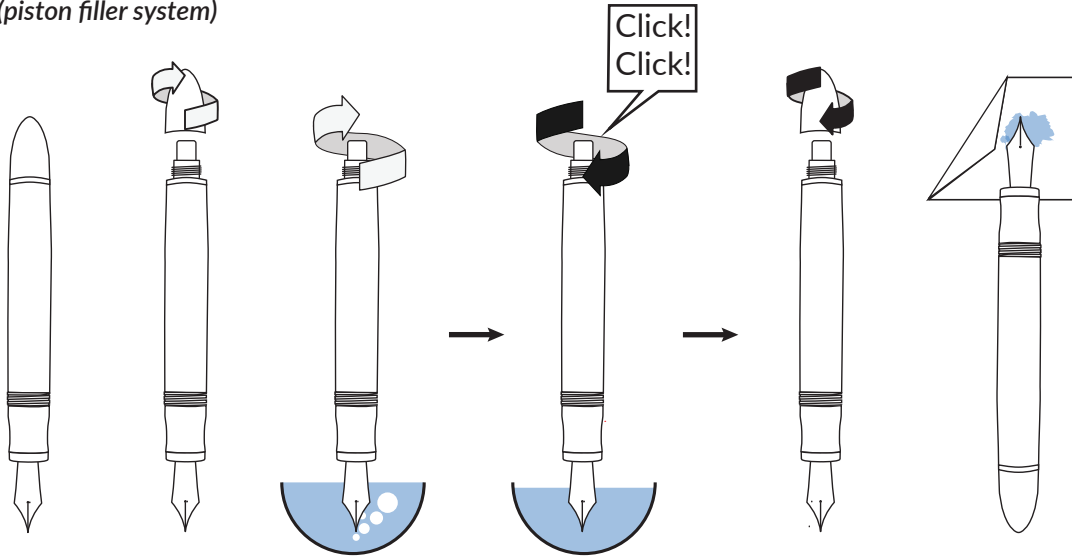
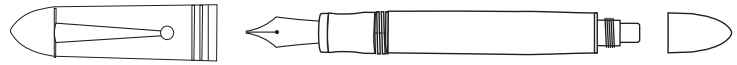


Modello Capodimonte

Ricaricare (sistema a stantuffo)

Refilling (piston filler system)

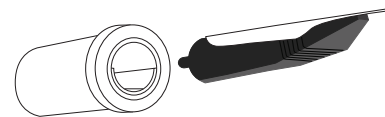
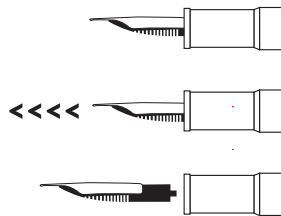


Rimuovere il pennino*

Removing the nib*

Prendere il pennino tra indice e pollice, tirare
Take nib between pointer and thumb, and pull

Conduttore e pennino fuori dalla penna
Ink feed and nib are out of the pen



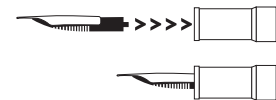
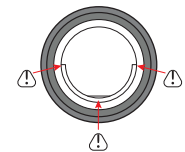
Montare il pennino*

Mounting the nib*

Prendere il pennino tra indice e pollice, spingere
Take nib between pointer and thumb, and push

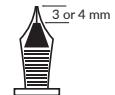
* Si consiglia di utilizzare un pezzo di cuoio, gomma o carta da cucina tra le dita per facilitare queste operazioni con il pennino.

We recommend using a piece of leather, rubber, or paper towel between your fingers to make these nib operations easier.



Il pennino dovrebbe essere allineato con il conduttore.

The nib should be aligned with the feed.



ATTENZIONE: Porta condotto incollato sulla penna!

Quando si installa il conduttore insieme al pennino, fare attenzione a installarlo nella posizione corretta come indicato nel grafico.

CAUTION: Nib housing glued into the pen!

When installing the feed along with the nib, be careful to install it in the correct position as shown in the graphic.