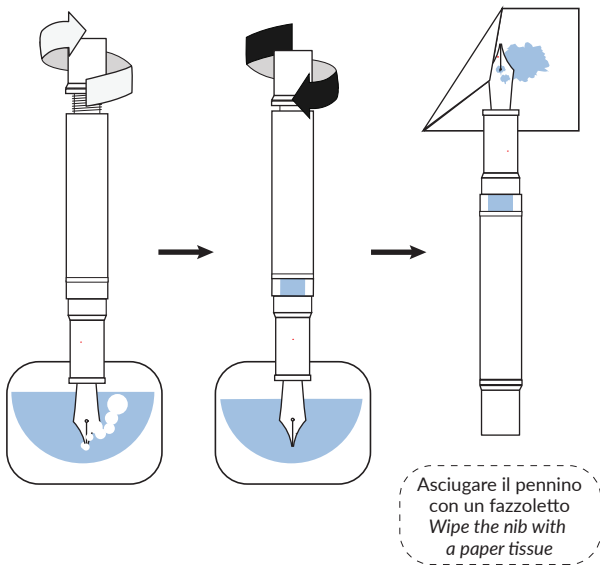


Ricaricare (sistema a stantuffo)
Refilling (piston filler system)



In caso di dubbi su come utilizzare la tua penna GIOIA, troverai un paio di video sul nostro profilo Facebook o Instagram.
In case of any doubts about how to handle your GIOIA pen, you will find a couple of videos on our Facebook and Instagram profiles.

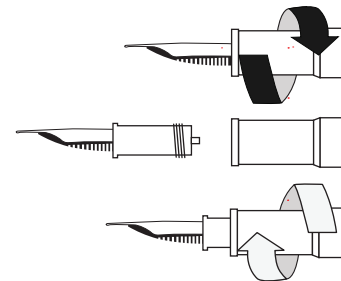


Rimuovere e montare il pennino / Removing and mounting the nib

Prendere il pennino tra indice e pollice, girare la penna in senso orario.
Take the nib between index finger and thumb, turn the rest of the pen clockwise.



(Gruppo pennino fuori dalla penna)
(Nib and feeder are out of the pen)

Prendere il pennino tra indice e pollice, girare la penna in senso antiorario.
Take the nib between pointer and thumb, turn the rest of the pen counter clockwise.



Rimuovere e montare il pistone
Removing and mounting the piston

- 1) Girare il codale (aprire il pistone), fino a che si vedono le parti piatte della filettatura.
1) Turn the knob (open the piston) until you see the flat parts on the threads.
- 2) Inserire la chiave sulle parti piatte della filettatura. Girare.
2) Place the jaws of the wrench around the flat parts of the threads. Turn.

-  Girare in senso orario per levare il pistone
Turn clockwise to take out the piston
-  Girare in senso antiorario per inserire il pistone
Turn counter clockwise to install the piston

